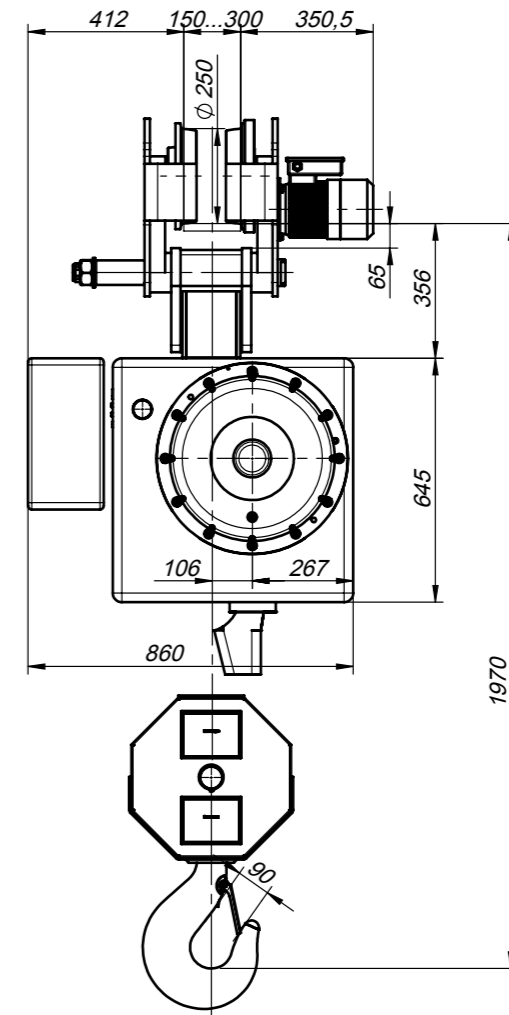


Hoisting Unit		
Electric hoist	type	MH7-40 4/1 H12 V4
Capacity	t	16,0
Mode of operation	FEM 9.511	2m
Lifting height	m	12
Lifting speed	m/min	4
Output	kW	12,5
Speed of revolution	min ⁻¹	920
Current	A	36,0
Power supply	---	3 ph / 380 V / 50 Hz
Control	---	pendant
Operation	---	indoor



Travelling Mechanism		
Travelling speed	m/min	20
Output	kW	2 x 0,37
Speed of revolution	min ⁻¹	905
Current	A	1,45
Travel wheel diameter	mm	250

					Озн. на графавост БДС-ISO 1302: Ra	Озн. на формата и разп. БДС-ISO 1101-1	Неозн. допуски БДС-ISO 2768
					БДС-ISO 128	Маса (kg) 1487.54	Материал:
Изм.	Брой	Номер	Подпис	Дата		1/1	balkancarpodem
Разр.	Татарлиев		10.12.2020				
Пров.			10.12.2020				
Утв.	Кавалов		10.12.2020				
Наименование:					Мащаб	Кат. №:	
Monorail trolley, standard headroom					1:20	Чертеж №: EKN20 MH7-40 4/1 H12 V4	